



£510,000

19C Richmond Terrace, Clifton, Bristol, BS8 1AA

37 Princess Victoria Street, Clifton, Bristol, BS8 4BX

Tel: 0117 370 0557

Email: clifton@elephantlovesbristol.co.uk

Web: www.elephantlovesbristol.co.uk

19C Richmond Terrace Clifton, Bristol, BS8 1AA

A Beautiful Two-Bedroom Apartment in the Heart of Clifton Village.

Set on the first floor of a handsome Grade II-listed Georgian townhouse on Richmond Terrace, this beautifully bright two-bedroom apartment has been renovated with exceptional care and attention to detail by its previous architect owners. Offering wonderful southerly light, charming period features, and access to private communal gardens, this home enjoys an enviable position in the heart of Clifton Village. A short walk connects you to independent cafes, shops, and restaurants in the village and Whiteladies Road, while Clifton Downs and the city centre remain clo

The apartment is located on Richmond Terrace, an outward-facing square set in Clifton's conservation area. The elegant Georgian townhouses are elevated above street level, offering privacy and charm. Access to the apartment is via a well-kept communal entrance and stairwell, reflecting the building's historic character.

The main living space is a light-filled, open-plan room spanning the front of the building. High ceilings and a trio of original sash windows with shutters provide verdant treetop views, while the southerly aspect allows natural light to stream in throughout the day. Beautiful oak parquet flooring runs underfoot, enhancing the sense of character, quality and sophistication.

A modern, thoughtfully designed kitchen with Carrara marble worktops integrates seamlessly within the space, offering sleek cabinetry and high-quality finishes. The room allows for a flexible layout, easily accommodating a dining and living area.



The arterial hallway, laid with tiled flooring, connects the living space to the two bedrooms positioned at the rear of the apartment. Both rooms are bright and overlook the communal gardens, providing a tranquil outlook. Generous storage and wardrobe space ensure practicality.

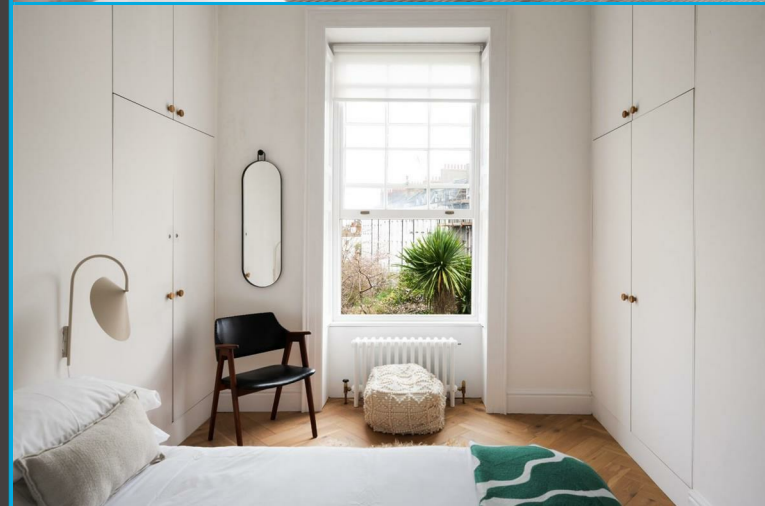
Between the two bedrooms is a contemporary bathroom and shower room, designed to maximize space with modern fixtures and finishes.

The private communal garden is a beautifully maintained hidden gem. Enclosed on three sides, with access via doorways in the individual rear garden walls, this peaceful space is planted with a variety of fruit trees, vegetables, and herbaceous plants. Open grassy areas, mature trees, and a pond attract local wildlife, creating a serene escape in the heart of Clifton.

The Area

Clifton Village is one of Bristol's most desirable locations, renowned for its elegant Georgian, Regency, and Victorian architecture. The village offers a fantastic range of independent cafes, shops, and restaurants.

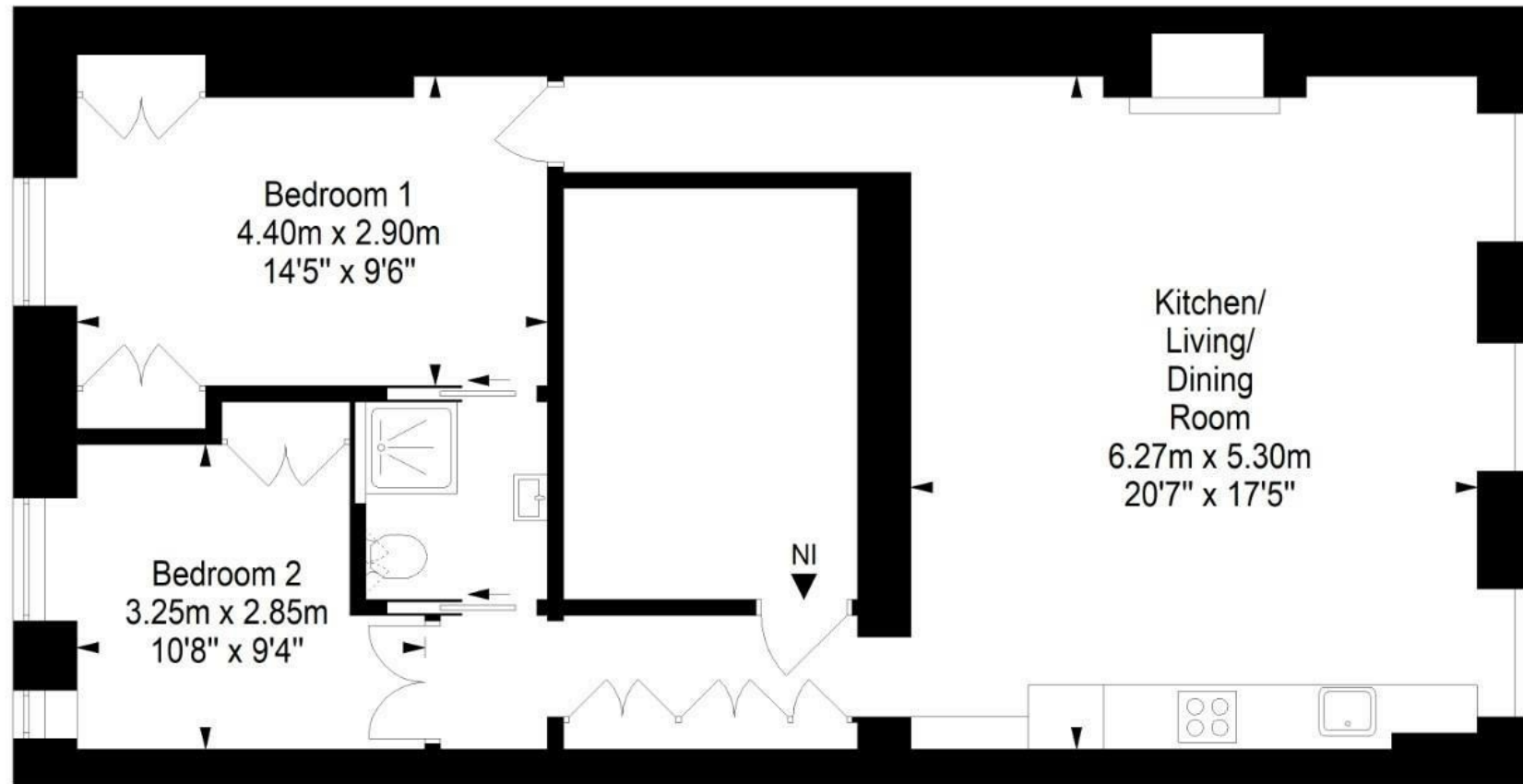
Nearby, the Clifton Suspension Bridge provides access to the green expanses of Ashton Court and Leigh Woods, while Clifton Downs offers 400 acres of green space for walking, running, or simply enjoying the view.





First Floor Flat, Richmond Terrace, Clifton, Bristol, BS8 1AA

Approximate Gross Internal Area = 71.0 sq m/ 764.3 sq ft



This floor plan has been drawn using RICS guidelines (GIA)

Disclaimer : Please note this floor plan is for marketing purposes and is to be used as guide only.
All Efforts have been made to ensure its accuracy at time of print



elephant 

Bishopston office

2 The Promenade, Gloucester Road, Bristol, BS7 8AL
t: 0117 3700556 e: Bishopston@elephantlovesbristol.co.uk

elephantlovesbristol.co.uk

Clifton office

37 Princess Victoria Street, Clifton, Bristol, BS8 4BX
t: 0117 3700557 e: Clifton@elephantlovesbristol.co.uk